



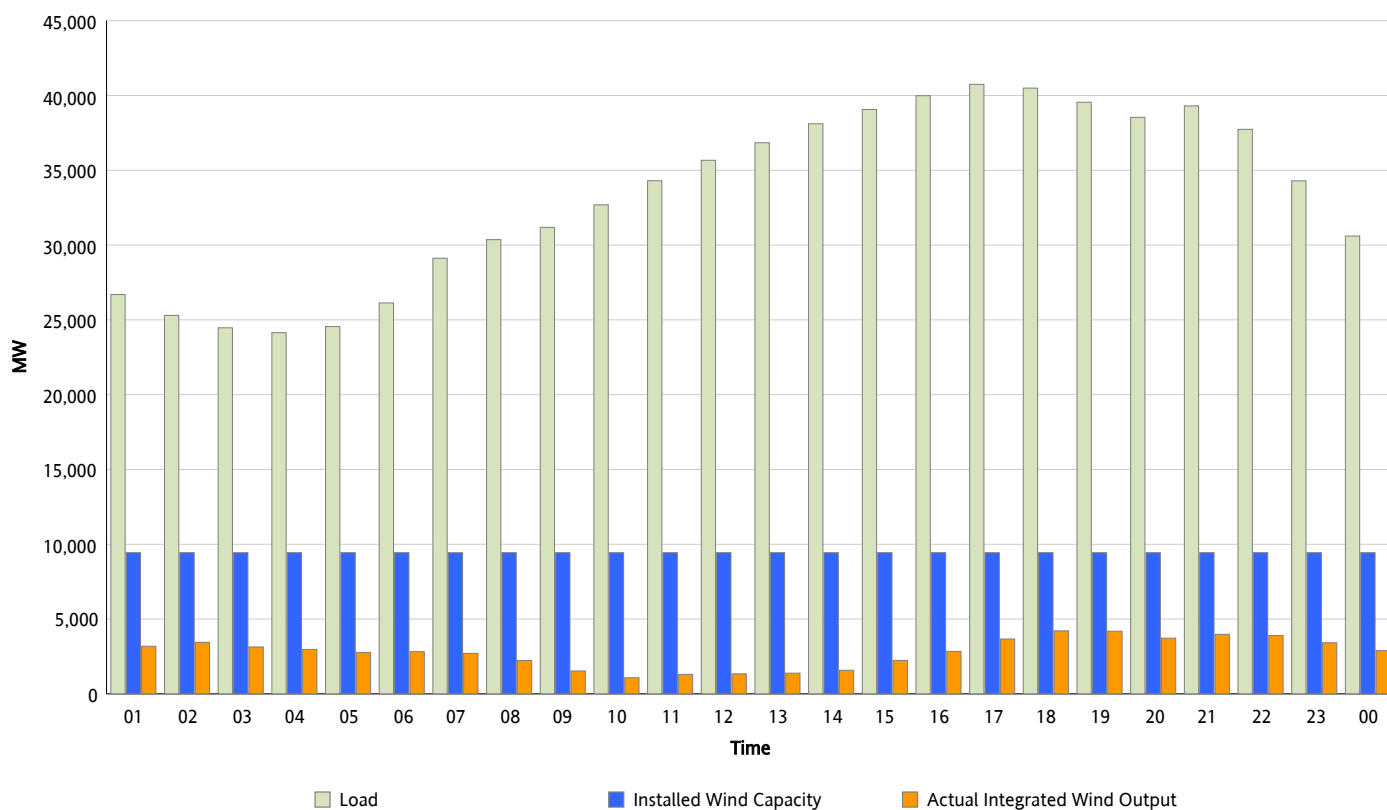
## ERCOT Grid Operations

### Wind Integration Report : 04/09/2012

Peak Load	40,748 MW
Load Peak Hour (HE)	17
Wind Over Peak	3,668 MW
Wind Record 03/18/12	7,917 MW
Max Wind Value*	4,407 MW
Wind Peak Time	17:57
Wind Integration %	10.93 %

#### Hourly Average Actual Load vs. Actual Wind Output

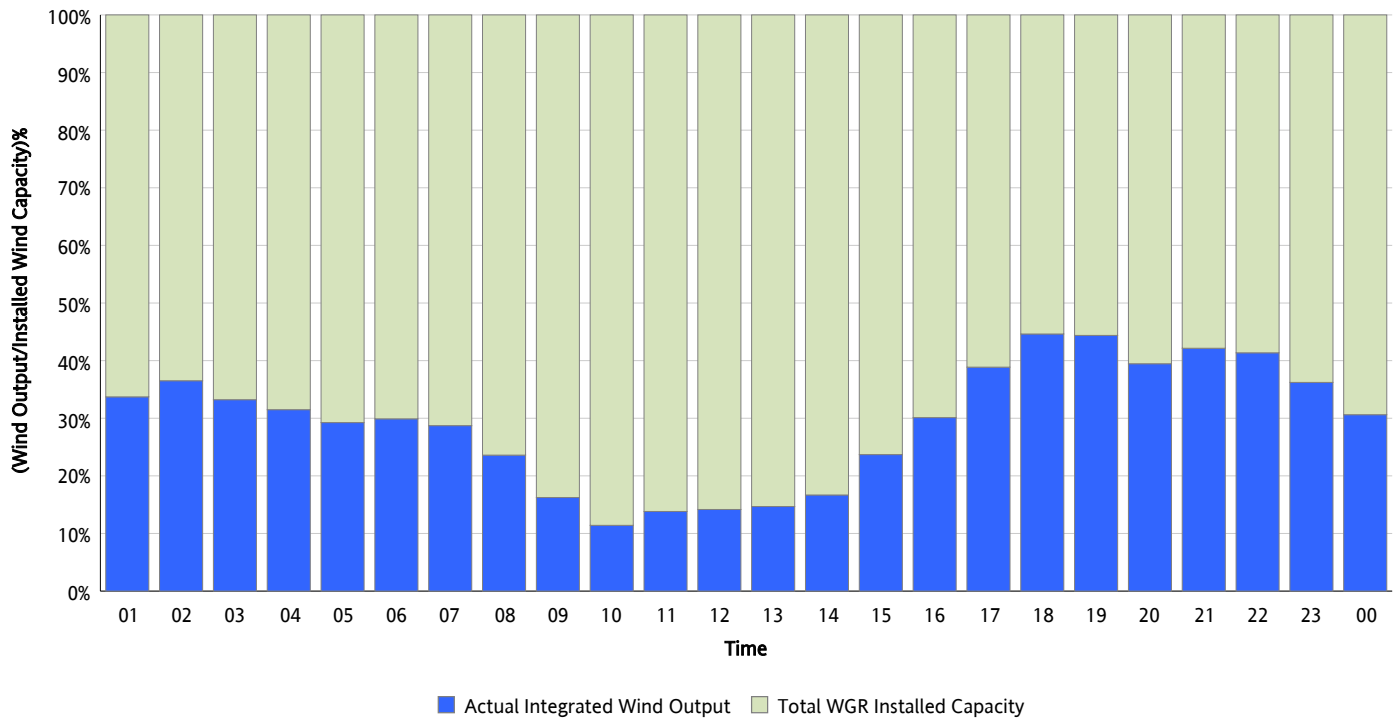
04/09/2012



\* Wind Record and Wind Max represent instantaneous values and the rest of the values are integrated over the hour

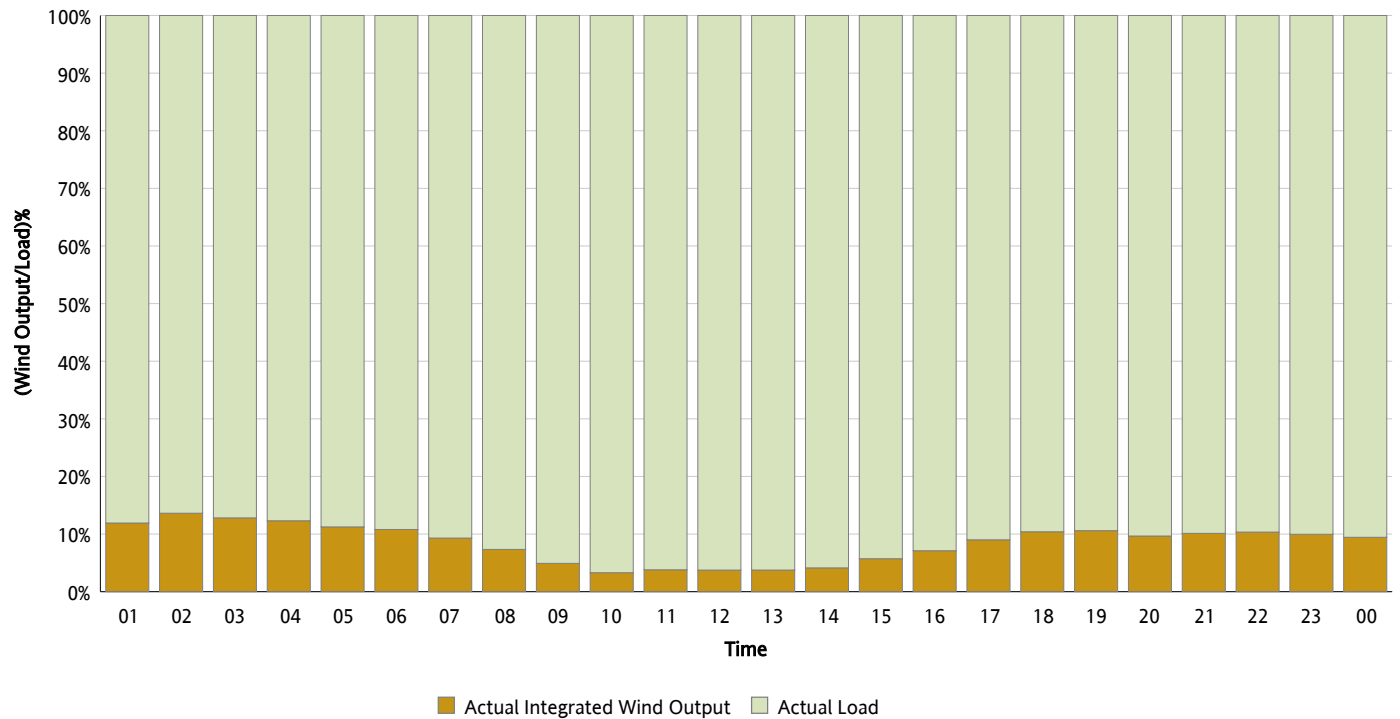
## Actual Wind Output as a Percentage of the Total Installed Wind Capacity

04/09/2012



## Actual Wind Output as a Percentage of the ERCOT Load

04/09/2012



## ERCOT Load vs. Actual Wind Output

04/02/2012 - 04/09/2012

